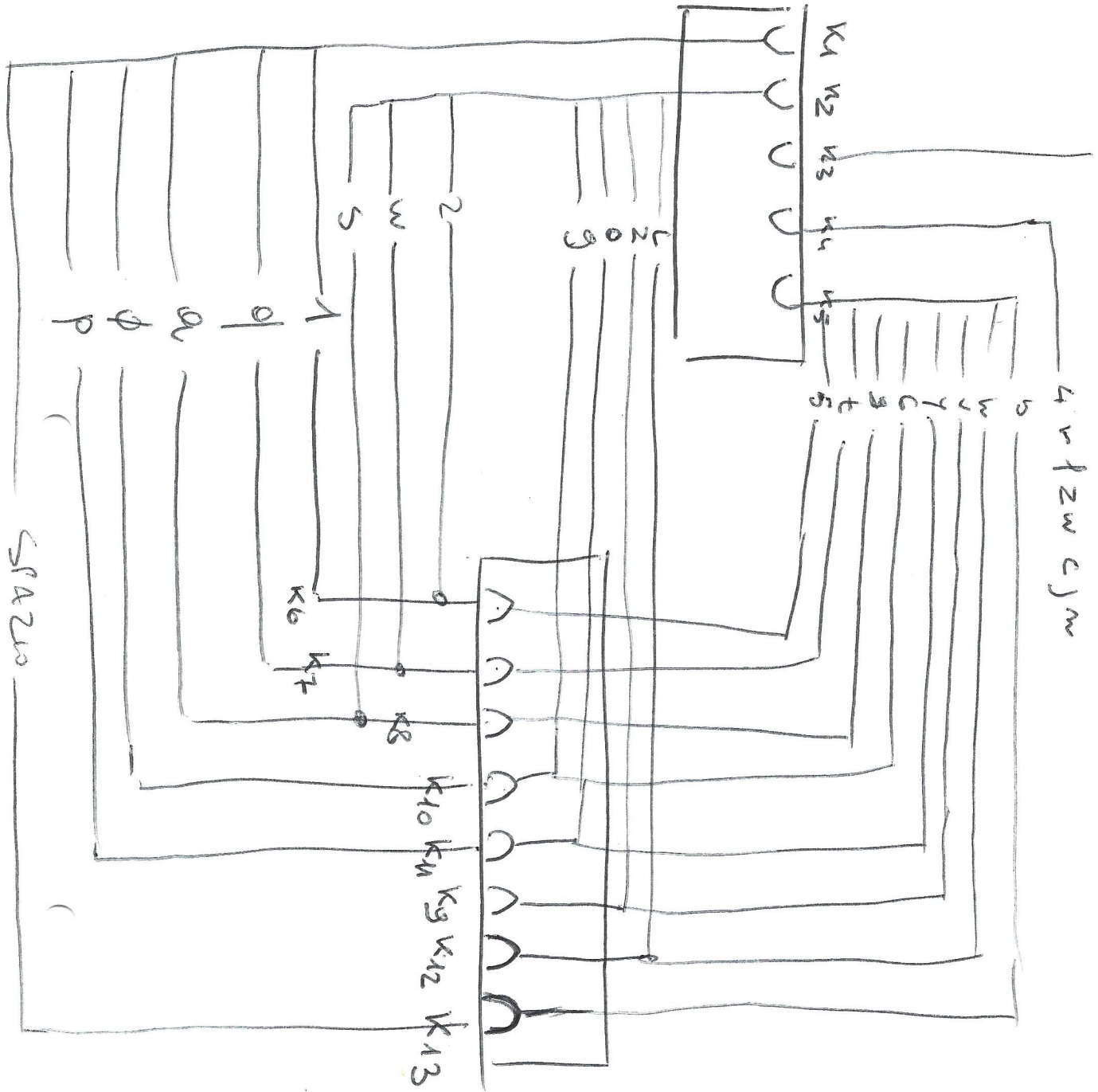


3ed 8ix km

4 v f z w c j m



SPAZIO

## Dimensione reale

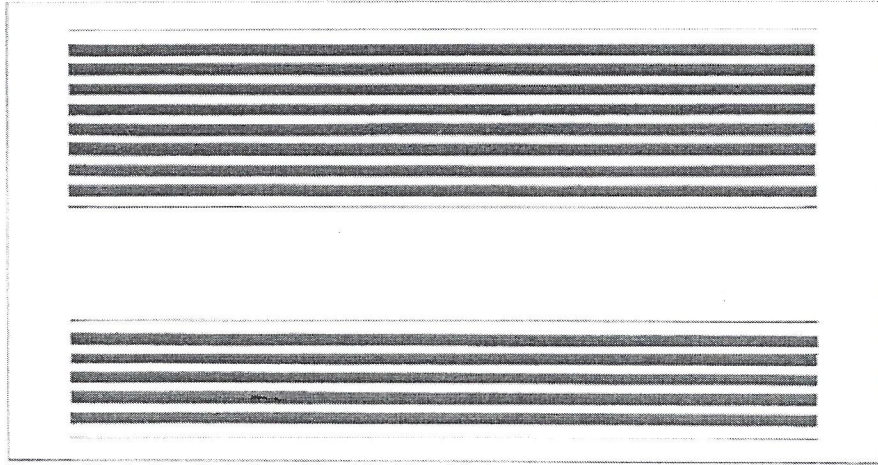


Figura A - Mascherino guida per il posizionamento dei conduttori.

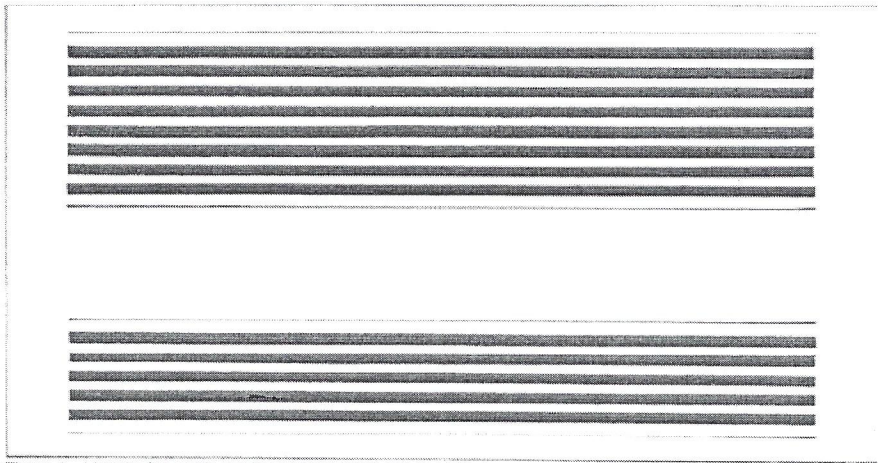


Figura A - Mascherino guida per il posizionamento dei conduttori.

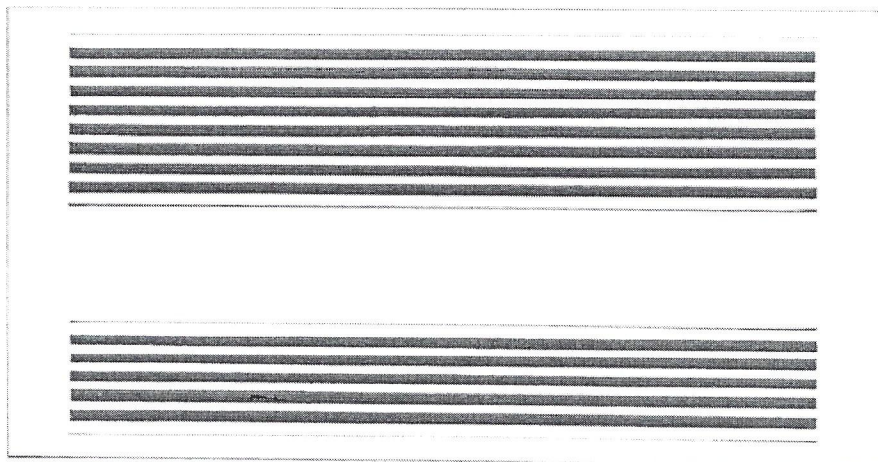


Figura A - Mascherino guida per il posizionamento dei conduttori.

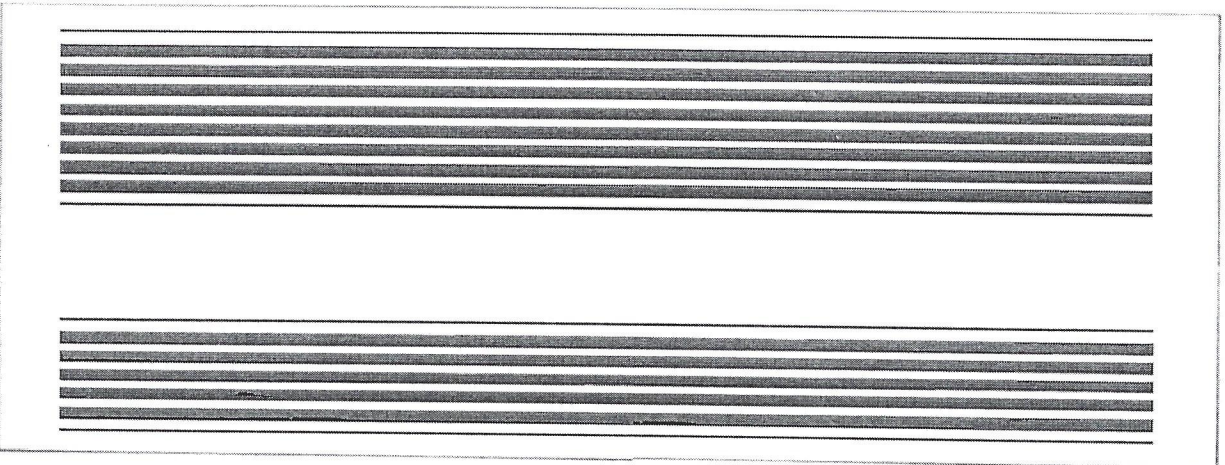
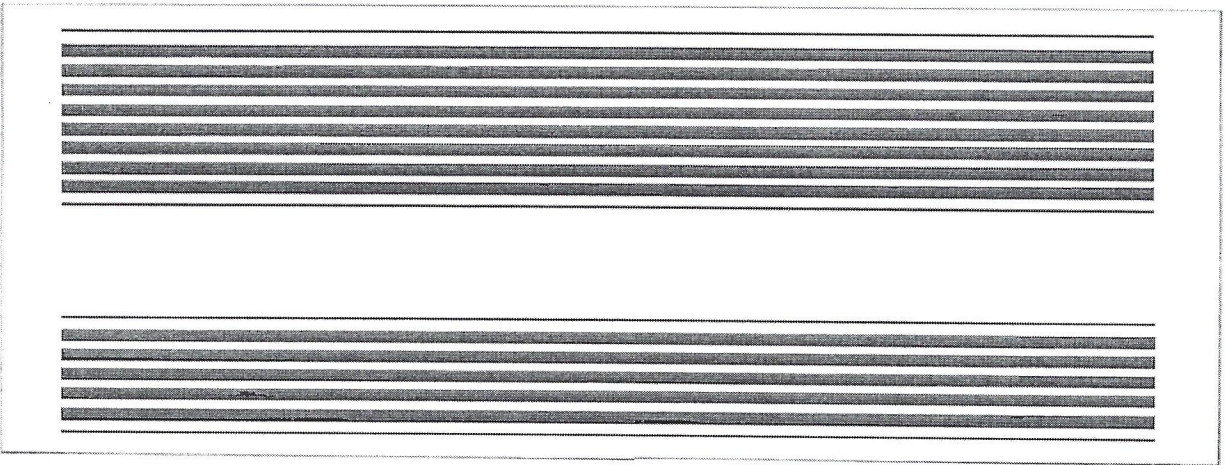
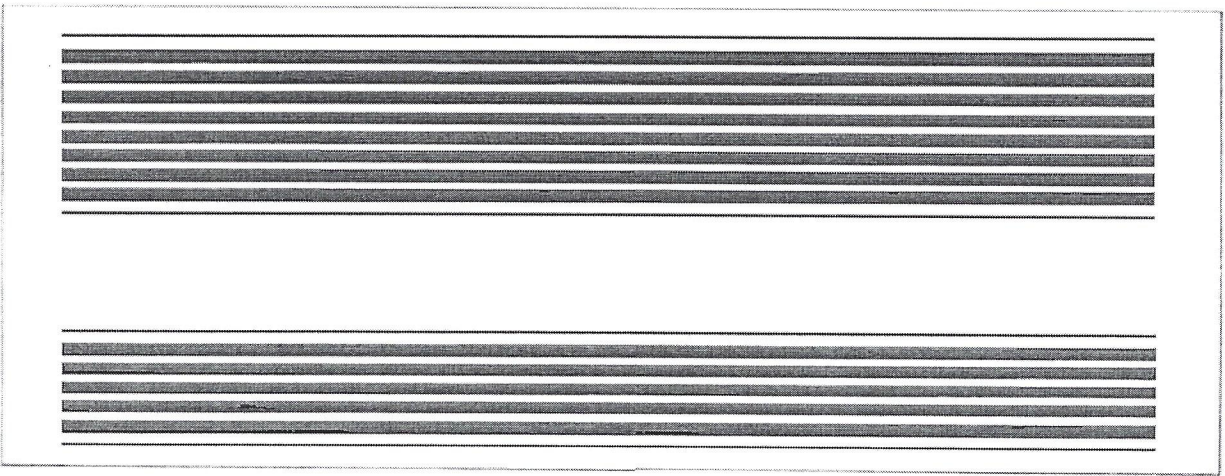


Figura A - Mascherino guida per il posizionamento dei conduttori.

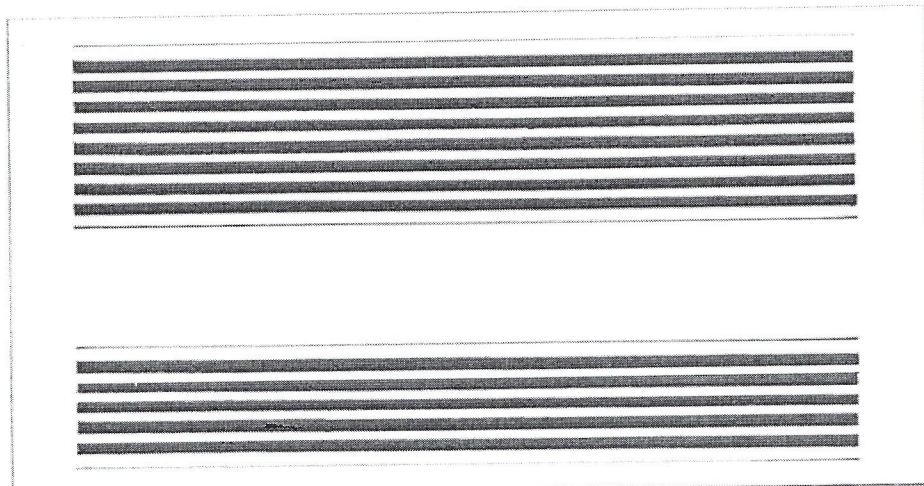


Figura A - Mascherino guida per il posizionamento dei conduttori.

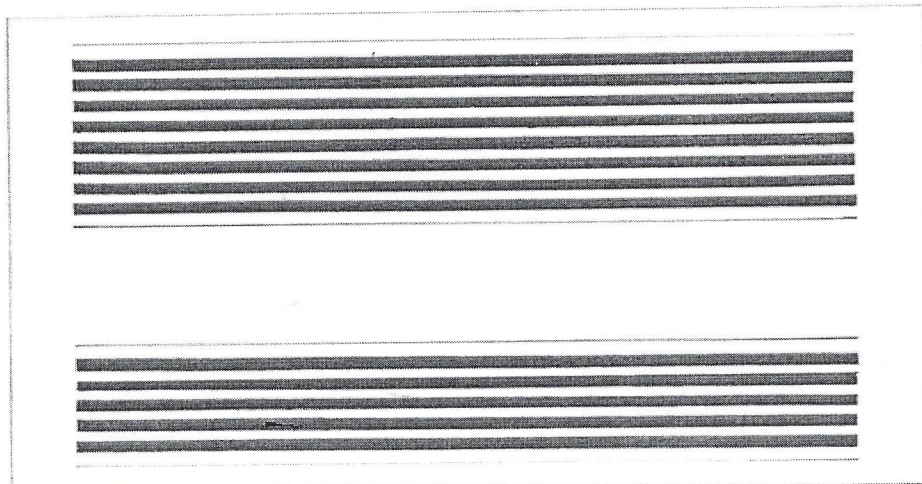
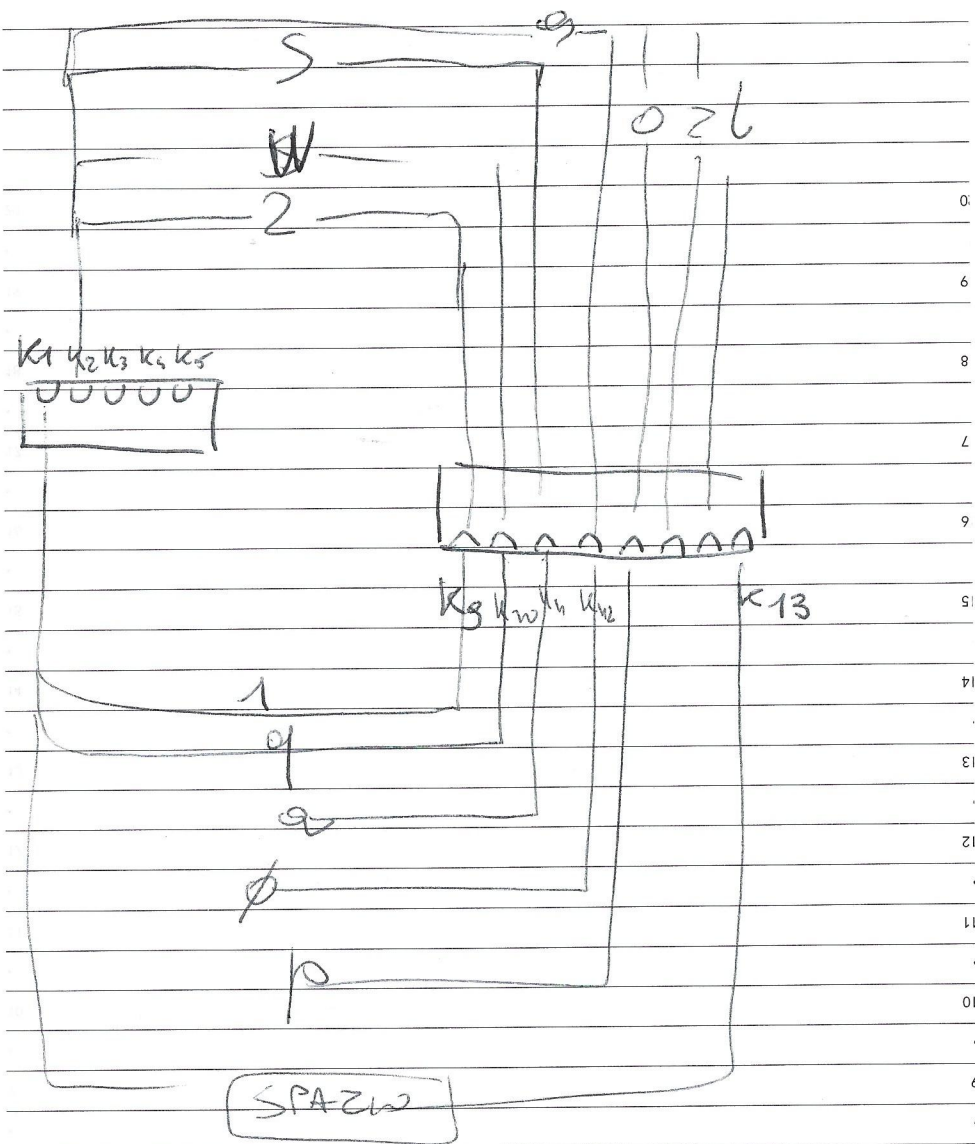
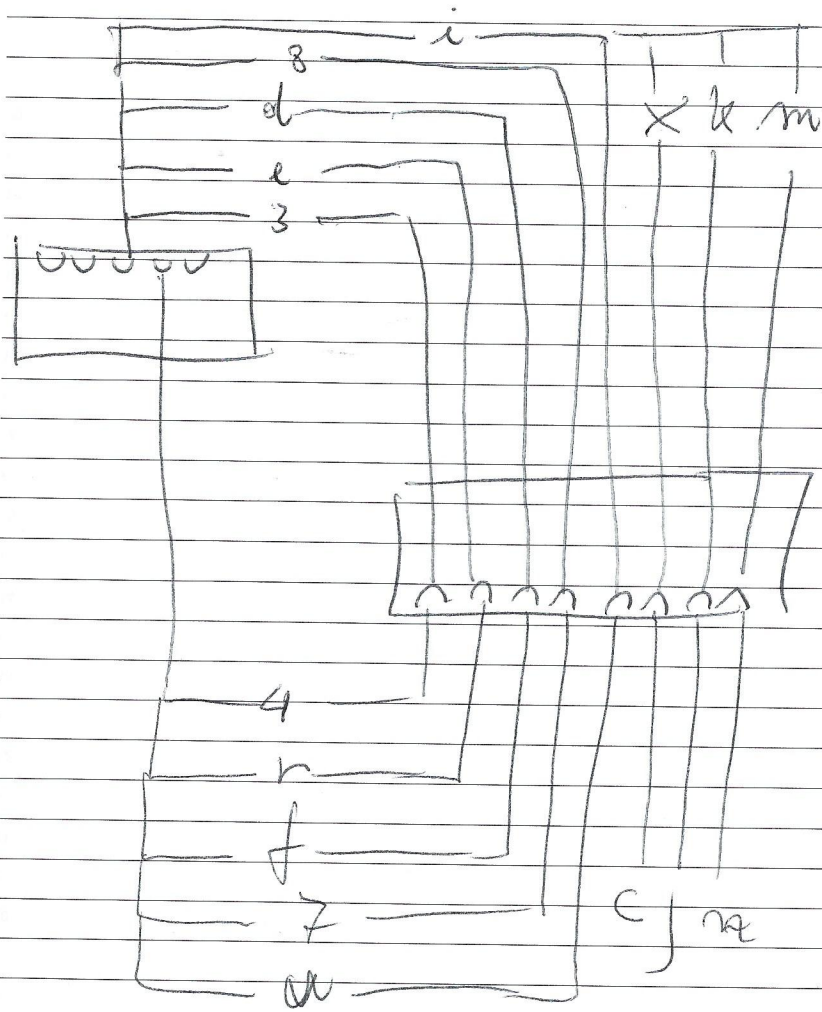


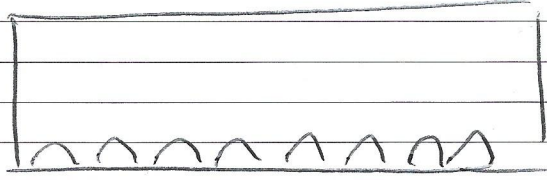
Figura A - Mascherino guida per il posizionamento dei conduttori.





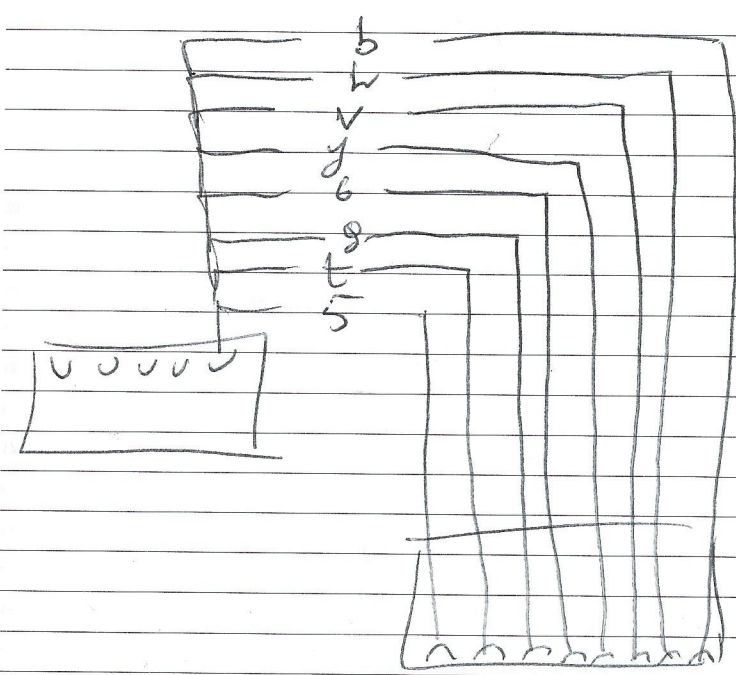


$k_1 k_2 k_3 k_4 k_5$



$k_6 k_7 k_8 k_{10} k_{11} k_9 k_{12} k_{13}$

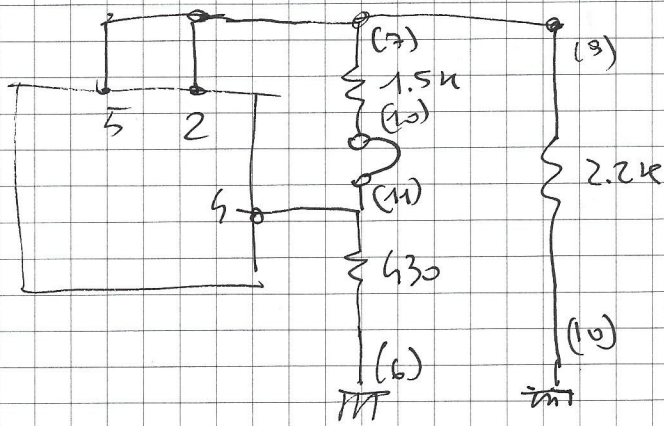
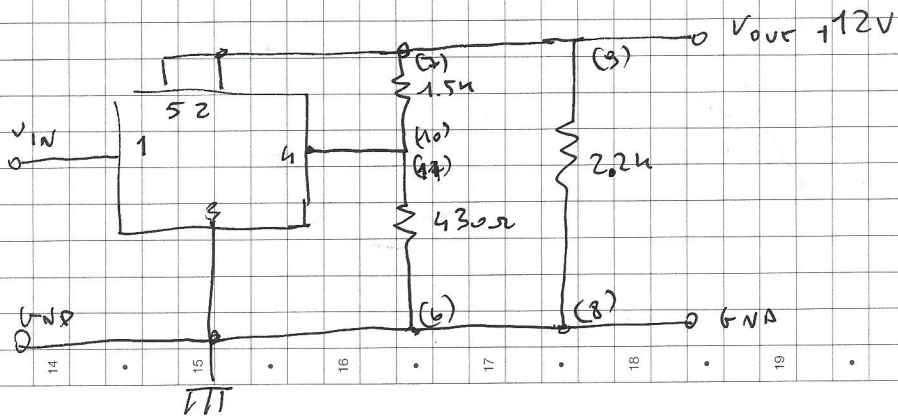
20  
.  
19  
.  
18  
.  
17  
.  
16  
.  
15  
.  
14  
.  
13  
.  
12  
.  
11  
.  
10  
.  
9  
.  
8



20  
.  
19  
.  
18  
.  
17  
.  
16  
.  
15  
.  
14  
.  
13  
.  
12  
.  
11  
.  
10  
.  
9  
.  
8

PARTITORE 220V

PER USCITA 12V



$h_{FE} = 25$

2N3055

